

NOTICE OF RACE

Sailhorse EuropaCup 29th, 30th and 31st of May 2025

The International Sailhorse Class Association-ISCA- EuropaCup 2025 will be organized by the Watersportvereniging Hellevoetsluis from Thursday May 29th till Saturday May 31st 2025. The event will take place on the South West side of the lake Haringvliet in the vicinity of Watersportvereniging Hellevoetsluis, Hellevoetsluis, the Netherlands.

Organizing authority (OA):

Watersportvereniging Hellevoetsluis (WVH)

1 RULES

- 1.1 The regatta will be governed by the rules as defined in 'The Racing Rules of Sailing (RRS) 2025 - 2028'.
- 1.2 The Sailing Instructions may contain minor changes to the rules.
- 1.3 If there is a conflict between languages the English text will take precedence.
- 1.4 The sailing Instructions will consist of the instructions in RRS Appendix S, Standard Sailing Instructions and supplementary sailing instructions that will be on the official notice board located in the club house of WVH.

2 ADVERTISING

- 2.1 If requested by the OA, boats shall display advertising chosen and supplies by the OA. If this rule is broken World Sailing Regulation 20.9.2 applies. [DP]

3 ELIGIBILITY AND ENTRY

- 3.1 The Europacup 2025 is open to all Sailhorse sailboats with a valid International Sailhorse Class Organization registration in the country land of origin.
- 3.2 Eligible boats can only participate the event after a complete fill in of the entry form on www.sailhorse.nl for both Helmsmen and crew member.
- 3.3 Event entry closing date is May 18th 2025 at 23:59 hrs.
- 3.4 At the check in at arrival on the venue, before entering any race, both helmsman and crew member shall undersign the entry form and the liability waver for consent.
- 3.5 Without a written conformation concerning the in art. 3.4 mentioned forms, participating of the Sailhorse Europacup is not allowed.
- 3.6 If participants are underaged (<18 years at the start of the event) the entry forms must be undersigned by their legal representatives.
- 3.7 Every person on board a Europacup participating boat who has his domicile in the Netherlands shall have the appropriate license.

- 3.8 Change of helmsmen, crewmembers or sail numbers may only take place after written approval by the Race Committee.
- 3.9 Replacement of a helmsman by a person, who has not been mentioned in the entry, is excluded. Changing a helmsman during a race by a crewmember is no ground for protest.
- 3.10 Boats with hull/build numbers 2348 or lower shall participate in the Touring Class.
- 3.11 There are no restrictions in the number of entries.

4 CLASSIFICATIONS

- 4.1 Each boat shall meet the requirements of the International Sailhorse Class Organization.

5 FEES

- 5.1 The entry fee per participating boat is € 95,- per boat. This includes breakfast and lunchpackage at Thursday, Friday, Saturday and Sunday. Including a barbeque on Thursday, all for 2 persons.
- 5.2 Non-sailing International Sailhorse Class Organization family members, supporters or coaches can also participate in above mentioned moments. The costs per extra person are mentioned in the online entry form and to be paid at completion of the entry form.
- 5.3 Payments by participating Dutch boats shall be done by iDeal to NL42INGB0005622451. Please mention name, sail- and hull number and if applicable the options.
- 5.4 Payments by participating non-Dutch boats shall be done by international money transfer to INGBNL2A (BIC) NL42INGB0005622451. Please mention name, sail- and hull number and if applicable the options.
- 5.5 Postponing the race is no ground for a refund.
- 5.6 For more information please contact Rolf Deen by mail at wedstrijdzaken@sailhorse.nl or by mobile +31 686 613 746.

6 QUALIFYING SERIES AND FINAL SERIES

Not applicable.

7 SCHEDULE OF CEREMONY'S, SKIPPER MEETINGS, RACES AND PRIZE GIVING

- 7.1 The regatta office is on the ground floor of the clubhouse of WVH. The registration office is in or near the club house of WVH.
- Wednesday May 28th Delivery day
 - boat delivery from 15:00 - 20:00 hrs.
 - Thursday May 29th race day. Max. 3 races
 - Check in participants at the race office 09:00 - 10:50 hrs.
 - Opening ceremony 11:00 - 11:20 hrs.
 - Skippers meeting in the club house WVH 11:20 - 11:30 hrs.
 - Warning signal 1st race not earlier than 13:00 hrs.
 - Warning signal 3rd race not later than 17:00 hrs.
 - Friday May 30th Race day. Max. 5 races
 - Warning signal 1st race not earlier than 10:00 hrs.
 - Lunch after 2 races not earlier than appr. 12:45 - 13:45 hrs.
 - Warning signal 3rd race after the break not earlier than 14:00 hrs.
 - Warning signal 5th race not later than 17:00 hrs.
 - Saturday May 31st Race day. Max. 4 races

- | | | |
|--|---------------------|------|
| ○ Warning signal 1 st race not earlier than | 10:00 | hrs. |
| ○ Lunch after 2 races not earlier than | appr. 12:45 - 13:45 | hrs. |
| ○ Warning signal 3 rd race after the break not earlier than | 14:00 | hrs. |
| ○ Warning signal 4 th race not later than | 16:00 | hrs. |
| ○ Prize giving and closing ceremony | appr. 18:00 | hrs. |

8 MEASUREMENTS

- 8.1 The OA will not execute any measurements of boats, sails, crew or equipment prior, during or after the International Sailhorse Class Europacup.
- 8.2 Boat- measurements or inspections may take place prior to, during or after the races by Sailhorse class officials.

9 THE SAILING INSTRUCTIONS

The Sailing Instructions (SI) will be available at the regatta office, will be displayed on the official notice board in the club house and is downloadable from the Dutch Sailhorse club website www.sailhorse.nl as from May 1st 2025.

10 VENUE

The location of the racing area is in front of the marina of WVH, Hellevoetsluis, the Netherlands, south westerly on lake Haringvliet. The area is displayed on Appendix A of the SI and these NOR.

11 THE COURSES

The courses will be windward - leeward races, see Appendix A of the SI and these NOR.

12 PENALTY SYSTEM

- 12.1 Conform RRS 2025 - 2028
- 12.2 RRS 44.1 is changed so that the Two-Turns Penalty is replaced by the One-Turn Penalty.

13 SCORING

- 13.1 Low Point System
- 13.2 There will be a valid Championship when 5 scoring races have been completed.
- 13.3 When less than 6 races are completed, a boats series score will be the total of here scores.
- 13.4 When 6 or more races are completed, a boat's series score will be the total of her races scores excluding her worst score.

14 SUPPORT BOATS

- 14.1 Support boats shall register at the regatta office each race day 08.00 - 10.00 hours.
- 14.2 A down payment of €25,- must be made for the entry and the 'COACH' flag. By returning the 'COACH' flag support boats will receive their down payment.
- 14.3 Support boats shall display the 'COACH' flag at all time [DP]
- 14.4 Checks by the OA of Support boats, their crew and their equipment prior, during or after the event can be made.
- 14.5 Support boats shall stay outside the racing area at all times. [DP]

15 BERTHING, PARKING AND TRANSPORT

- 15.1 Only boats and trailers are allowed to be parked on or within the designated area on the parking lot appointed by the officials of the WVH.

- 15.2 Participants- and visitors cars must be parked on the parking lot at all times.
- 15.3 Tents and Campers are only allowed in the designated area appointed under supervision of the harbourmaster of WVH.
- 15.4 Launching sailing boats and or RIB's of competitors and their coaches at the launching ramp of WVH is for the boat owners own risk and liability. WVH doesn't except any liability what so ever.
- 15.5 Berthing the participating boats prior to, in between and after the races, must be in the designated berthing boxes communicated by the Harbourmaster of WVH.
- 15.6 At all-time competitors shall follow up the directions of the event officials. No exceptions!
- 15.7 When arriving earlier and or want to stay longer, WVH can provide you (at a reasonable fee) a place for your camper or tent and equipment. Therefor please contact the WVH officials.

16 SAFETY EQUIPMENT

- 16.1 While afloat each boat must have on board a towing line of at least 12 meters in length and of at least 8mm in diameter. The anchor mooring is not a substitute
- 16.2 While afloat all competitors have to wear a personal floatation device to the minimum standard ISO 12402-5 (CE 50 Newtons).

17 RIGHT TO USE NAMES AND LIKENESS

By participating the International Sailhorse Class Organization Europacup a competitor automatically grants the OA and the sponsors the right to, in perpetuity, make, use and show, from time to time and at their discretion, any (still) motion pictures, live, taped or filmed television and other reproductions of the competitor and its material, during and after the Sailhorse Europacup without any compensation.

18 RADIO COMMUNICATION

Except in an emergency, a boat that is racing shall not make voice or data transmissions and shall not receive voice or data communication that is not available for all boats.

19 PRIZES

- 19.1 Sailhorse Europacup prizes will be provided by the Sailhorse Sailing Club.
- 19.2 Prizes will be given to the first, second and third boat in the overall results.
- 19.3 Each prize consists one for the helmsman and one for the crew member.
- 19.4 The Sailhorse perpetual prize will be handed out to the winning team of the Championship.
- 19.5 The winning team of the Championship will be honored with the title "European Champion in the Sailhorse Class 2025".
- 19.6 The perpetual Sailhorse Pan will be given to the runner-up.

20 DISCLAIMER OF LIABILITY

Competitors participate in the Sailhorse Europacup entirely at their own risk. See rule 4, Decision to Race.

The organizing authority will not accept any liability for material damage or personal injury or death sustained in conjunction with or prior to, during, or after the regatta.

21 INSURANCE

- 21.1 Each participating boat and their crew shall be insured with valid third-party liability insurance with a minimum cover of €1.000.000 per event or the equivalent.
- 21.2 In case a boat has caused damage to another boat and has been disqualified, relevant info of that boat's insurance policy will be made available to the other boat.
- 21.3 Prior to or during registration a copy of the valid insurance for the participating skipper, crew and boat shall be handed over to the OA.
- 21.4 If participants failed to give evidence of the (insurance) documents as mentioned in art. 21.3 they are not allowed to participate in the Sailhorse Europacup 2025.

22 FURTHER INFORMATION

22.1 *Marina management*

Address : Heliushaven 10, 3221LT, Hellevoetsluis, the Netherlands

Telephone : +31 650 583 775

Email : havenmeesterheliushaven@wvhellevoetsluis.nl

22.2 *Regatta bureau*

Chair WVH-member

Member Henk van Dijk

22.3 *Race Committee*

Race officer Henk de Graad henk@degraad.nl +31 686 619 591

Race officer Kees Boon keesboon@outlook.com +31 648 762 144

22.4 *Protest committee*

Chair WVH-member

Member WVH-Member

Member Frans Waller

22.5 *Accommodation*

Camping 't Weergors +31 181 312 430 www.weergors.nl

Camping Ketijl +31 625 216 373 www.campingketijl.nl

Cape Helius Roompot www.roompot.nl

Europarcs Poort van Zeeland www.europarcs.nl

For information and or reservations for the limited camper spots and tent spots at WVH we refer to the online entry form. If you have questions, please contact Rolf Deen of the Dutch Sailhorse Class Organization.

Rolf Deen +31 0686 613 746 wedstrijdzaken@sailhorse.nl

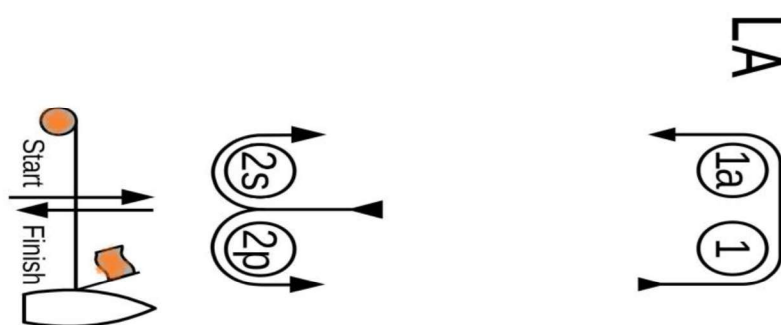
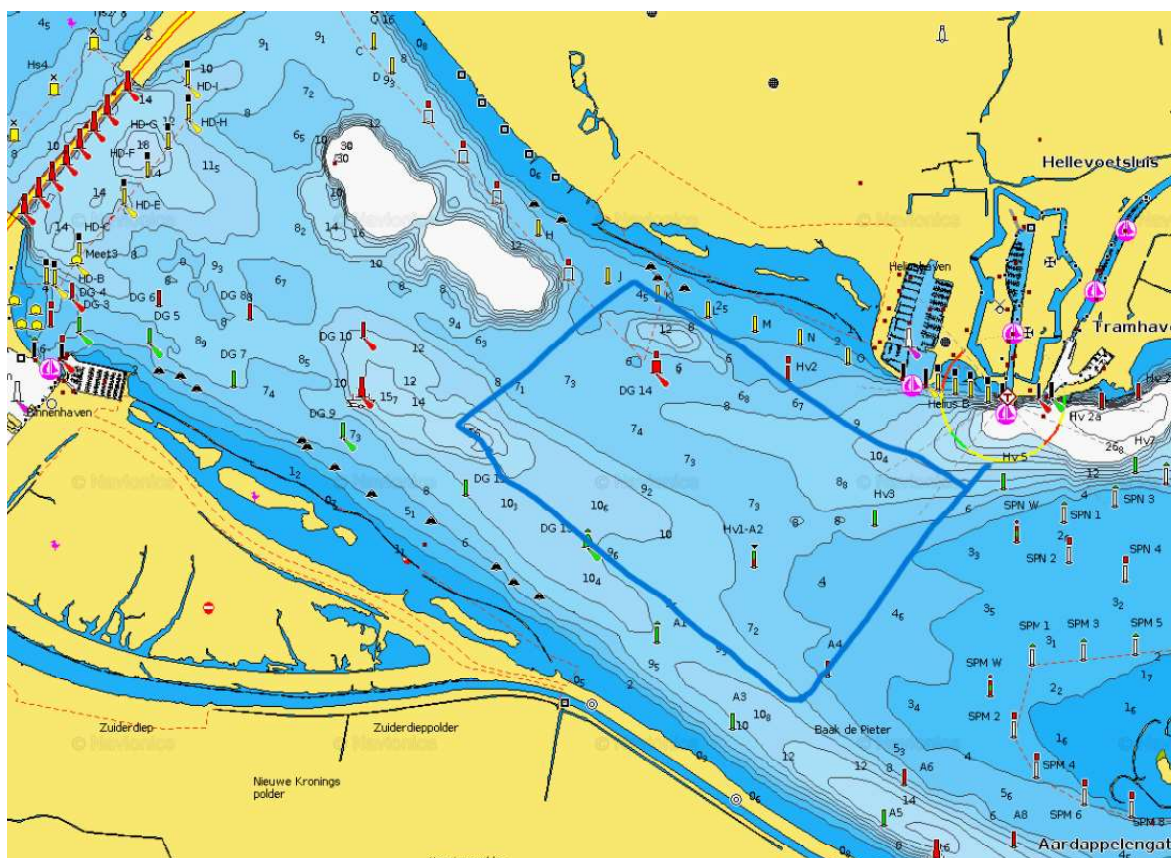
22.6 *Marina Information*



Watersportvereniging Hellevoetsluis www.wvhellevoetsluis.nl

22.7 *Regional Tourist information*

Op Voorne Putten www.opvoorneputten.nl

APPENDIX A



	Course LA: Windward/Leeward with Offset Mark. Leeward finish	Course signal
LA2	Start – 1 – 1a – 2s/2p – 1 – 1a – Finish	Pennant 2 
LA3	Start – 1 – 1a – 2s/2p – 1 – 1a – 2s/2p – 1 – 1a – Finish	Pennant 3 
LA4	Start – 1 – 1a – 2s/2p – 1 – 1a – 2s/2p – 1 – 1a – 2s/2p – 1 – 1a – Finish	Pennant 4 