



Sailing Instructions

Sailhorse Class EuropaCup 29th , 30th , and 31th of May 2025 Hellevoetsluis, The Netherlands

1 RULES

The regatta will be governed by the rules as defined in the Racing Rules of Sailing (RRS) 2025 – 2028, the Notice of Race (NOR) and these Sailing Instructions (SI).

2 NOTICES TO COMPETITORS

2.1 Notices to Competitors (NTC) will be posted on the official notice board, near the regatta office in the clubhouse of Watersportvereniging Hellevoetsluis (WVH) Heliushaven 10 , Hellevoetsluis.

3 CHANGES TO SAILING INSTRUCTIONS

3.1 Any change to the SI will be posted on the official notice board before 09:00 hrs. on the day it will take effect.

3.2 Any change to the schedule of races will be posted on the official notice board by 18:00 hrs. on the day before it will take effect.

4 SIGNALS MADE ASHORE

4.1 Signals ashore will be displayed at the flag pole in front of the WVH club house near the regatta office.

4.2 When flag AP is displayed ashore, '1 minute' is replaced with 'not less than 30 minutes' in the race signal AP.

5 SCHEDULE OF RACES

5.1 As announced in the NOR and if necessary overruled by a NTC displayed on the official notice board nearby the regatta office.

6 CLASS FLAGS

As announced in the NOR or and if necessary overruled by a NTC displayed on the official notice board nearby the regatta office.

7 RACING AREA, STARTING AREA AND FINISH AREA

7.1 The racing area is the northwesterly side of Lake Haringvliet in front of the marina of WVH.

7.2 The starting area has been defined in Appendix A

8 THE COURSES

8.1 The windward – leeward course LA with a Leeward finish will be used. The course diagram in Appendix A show the course, the course designations, the approximate angles between legs, the order in which marks are to be passed, the side on which each mark is to be left and the Pennant flags for the different courses.

8.2 No bearings, headings or positions of the marks positions will be given. Not on the shore, not on the race committee starting boat.

8.3 When already started a course will not be shortened. This changes RRS 32

8.4 No later than 1 minute after the warning signal, the race committee start boat will display the course to be sailed with the use of the Pennant flags 2, 3 or 4.

9 MARKS

- 9.1 Marks 1 and 1a will be orange cylindrical shaped buoys.
- 9.2 Marks 2S and 2P will be yellow triangular shaped buoys.
- 9.3 The following marks are rounding marks: 1, 1a, 2s and 2p.
- 9.4 The new marks, as provided in SI 12.1 are the original orange cylindrical shaped buoys.
- 9.5 The starting line marks will be a yellow cylindrical shaped buoy and the orange flag on the committee boat.
- 9.6 The finishing marks will be a yellow cylindrical shaped buoy and a blue flag on the committee boat.
- 9.7 A committee boat signaling a change of the course is a mark as provided in SI 12.2

10 AREA THAT ARE OBSTRUCTIONS

Does not apply

11 THE START

- 11.1 Races will be started in accordance with RRS 26.
- 11.2 The starting line will be between an orange flag displayed on the committee boat and a yellow cylindrical shaped buoy on the portside of the starting line.
- 11.3 Boats whose warning signal has not been made shall avoid the starting area during the starting sequence for other races. (DP)
- 11.4 A boat that does not start within 4 minutes after her starting signal will be scored Did Not Start without a hearing. This changes rule A4 and A5.
- 11.5 Sail numbers will not be displayed on the race committee start boat or will be communicated by radio communication.

12 CHANGE OF THE NEXT LEG OF THE COURSE

- 12.1 To change the next leg of the course, the race committee will move the original mark (or the finishing line) to a new position.
- 12.2 Except a gate, boats shall pass between the committee boat signaling the change of the next leg and the nearby mark, leaving the mark to port and the committee boat to starboard. This changes RRS 28.
- 12.3 If new positioned marks are visible from the previous mark no bearings, headings or positions of the new marks positions will be given. Not on the shore, not on the committee boat.

13 THE FINISH

- 13.1 The finishing line will be between a yellow cylindrical shaped buoy on the port end of the finishing line and a displayed orange flag on the committee boat on the starboard end of the finish line (Appendix A).
- 13.2 If the race committee is absent when a boat finishes, she should report her finishing time, and her position in relation to nearby boats, to the race committee at first reasonable opportunity.
- 13.3 After finishing, boats shall immediately leave the finishing area (SI 7.3) due to correct finish registration of other competitors.

14 PENALTY SYSTEM

- 14.1 Rule 44.1 is changed, the two-turns penalty is replaced by a one-turn penalty, including a gybe and a tack.
- 14.2 Appendix P2 will not apply. No jury or observers are present on the water during the races.

15 TIME LIMITS AND TARGET TIMES

- 15.1 Time limits for the Sailhorse class shall be displayed on the NTC on the official notice board nearby the regatta office in the club house of WVH.
If no boat has passed Mark 1 within the Mark 1 time limit the race will be abandoned. Failure to meet the target time will not be grounds for redress. This changes RRS 61.1 (a)
- 15.2 Boats failing to finish within fifteen (15) minutes after the first boat in the Sailhorse class sails the course and finished will be scored Did Not Finish. This changes RRS 35, A4 and A5.

16 PROTESTS AND REQUESTS FOR REDRESS

- 16.1 Protest forms are available at the regatta office. Protests and request for redress or reopening shall be delivered within the protest time limit.
- 16.2 The protest time limit is 45 minutes after the last boat has finished the last race of the day or the race committee signals no more racing today, whichever is later.
- 16.3 Notices will be posted on the Official Notice Board not later than 30 minutes after the protest time limit to inform competitors of hearings in which they are parties or named as witnesses. Hearings will be held in the regatta office, according to the posted schedule.
- 16.4 Notices of protests by the race committee, technical committee or protest committee will be posted on the official notice board to inform boats under RRS 60.3 sub b
- 16.5 Breaches of SIs 11.3, 18, 21, 23, and 27 will not be grounds for a protest by a boat. This changes RRS 60.1(a)
- 16.6 On the last scheduled day of racing a request for redress based on a protest committee decision shall be delivered no later than 30 minutes after the decision was posted. This changes RRS 61.2

17 SCORING

- 17.1 The Low Point System of RRS Appendix A will apply.
- 17.2 The number of required amount of races to be completed to constitute a series is displayed at a NTC on the official notice board nearby the regatta office in the club house of WVH.
- 17.3 a. When fewer than six (6) races have been completed a boat's series score will be the total of her race scores.
b. When six (6) or more races have been completed a boat's series score will be the total of her race scores excluding her worst score.
- 17.3 To request a correction of an alleged error in posted race or series results, a boat shall complete a scoring inquiry form available at the Regatta Office.

18 SAFETY REGULATIONS

- 18.1 Safety regulations will apply as written in the NOR art.16 and the SI. All the mentioned safety requirements shall not be removed after finishing and arrival in the marina until it is clear that the Race Committee will stop the safety inspections.
- 18.2 On the water, before the first race of the day, boats shall sign in as soon as possible at the committee starting boat by passing within hearing distance and notify the race officers the participation of the race. Boats failing to comply will be penalized without a hearing. The penalty for such breach (sign in) will be 20% for all races of the day, calculated in accordance with RRS 44.3 sub c, scoring penalty.
- 18.3 A boat that retires from the race shall notify the race committee on the water if possible and shall in all cases inform the race committee onshore as soon as possible.
- 18.4 When reentering a new race, after earlier retiring, boats shall proceed in accordance with SI 18.2.

19 REPLACEMENT OF CREW OR EQUIPMENT

- 19.1 Substitution of competitors will not be allowed without prior written approval the race committee [DP]. Requests can be submitted through the regatta office.
- 19.2 Substitution of damaged or lost equipment will not be allowed unless approved by the race committee. Requests for substitution shall be made to the race committee at the first reasonable opportunity.[DP]

20 EQUIPMENT AND MEASUREMENT CHECKS

- 20.1 On the water, a boat can be instructed by the race committee to proceed immediately to a designated area for inspection. Ashore, equipment may be inspected or measured at times specified in the class rules, the notice of race or as mentioned in the NTC.
- 20.2 A boat or equipment may be inspected at any time for compliance with the class rules and Sailing Instructions

21 EVENT ADVERTISING

By participating in the regatta, a competitor automatically grants the organizing authority and the sponsors of this regatta the right to, in perpetuity, make, use and show, from time to time and at their discretion, any (still) motion pictures, live, taped or filmed television and other reproductions of the competitor and its material, during and after the races without any compensation.

22 OFFICIAL BOATS

- 22.1 The rescue boats will display a red flag "Rescue"
- 22.2 The Race Committee boats will display a white flag "RC"

23 SUPPORT BOATS

- 23.1 Team leaders, coaches and other support personnel with support boats shall, at all-time, stay outside areas where boats are racing from the time of the preparatory signal for the first class to start until all boats have finished or retired or the race committee signals a postponement, general recall or abandonment. [DP]
- 23.2 At the regatta office journalists, team leaders, coaches and other support personnel on support boats shall request for a "coach" or "Press" flag at least 1 hours before the 1st race of that day starts. The deposit for the flags is €25,- After the event the deposit will be returned after handing over the flag(s) to The Race Committee at the Regatta Office.
- 23.3 Without the approval of the race committee and without displaying a registered flag it is not allowed to be in the vicinity of the start-, finish and race area. (S.I. 7)
- 23.4 The articles 24, and 27 of the S.I. will also apply for support boats.
- 23.5 The press boats will display a green flag "Press"
- 23.6 The coach boats will display a Yellow flag "coach"
- 23.7 Coach boats shall not interfere with race committee- or rescue boats. Actions by official boats shall not be grounds for requesting redress by a boat. This changes RRS 60.1 sub b.

24 TRASH DISPOSAL

- 24.1 Trash may be placed aboard support and race committee boats or in the trash bin on the beach or club house of WVH. The penalty for breaking RRS 55 is 5 points of the total score of the last sailed race.

25 HAUL-OUT RESTRICTIONS

Does not apply.

26 DIVING EQUIPMENT AND PLASTIC POOLS

Does not apply

27 RADIO COMMUNICATION & ELECTRONIC EQUIPMENT

Except in an emergency a boat shall not make voice or data transmissions and shall not receive voice or data communication that is not available to all boats.

28 PRIZES

28.1 Prizes will be awarded to each member of the crew placed first, second and third in their class.

28.2 Other prizes as mentioned in the NOR published prior to this event.

29 DISCLAIMER OF LIABILITY

29.1 Competitors will participate in the regatta entirely at their own risk. See RRS 4, "DECISION TO RACE". The organizing authority, the Watersportvereniging Hellevoetsluis, the involved race committee and other parties and/or persons involved, will not accept any liability for material damage, or personal- injury or death, sustained direct or indirect in conjunction with or, prior to, during or after the regatta.

30 INSURANCE

30.1 Each participating boat, including support boats shall be insured with a valid third-party liability insurance, with a minimum cover of € 1.000.000 per incident.

30.2 Prior to the registration the organizing authority will ask participants to give evidence of the third-party liability insurance policy of their boat or the boat on which they are take part with in any race organized by WVH.

30.3 Participants who fail to show their third-party liability insurance policy (original or copy) can't participate in any race organized by the OA (WVH).

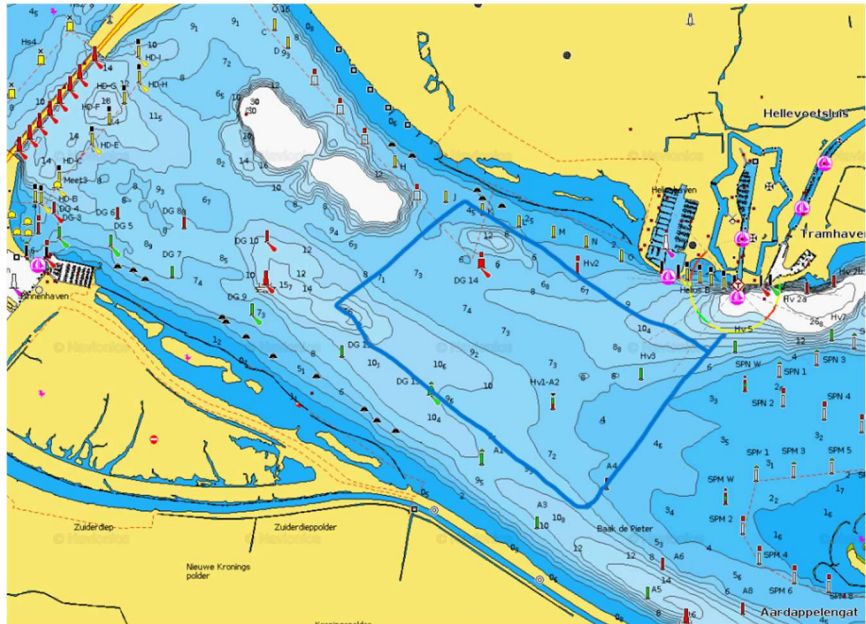
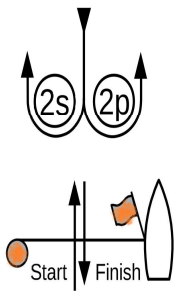
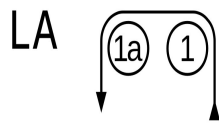
30.4 In case a boat has caused damage to another boat, relevant info of that boat's owners details will be made available to the other boat

31 DEFINITIONS

Organizing Authority	Watersportvereniging Hellevoetsluis (WVH)
Regatta Office	Office in the clubhouse of WVH.
Official Notice Board	White Board for notice to competitors in the clubhouse of WVH
The Race Committee	(A bunch of nice people already working their butts off for weeks to present you the best regatta time as possible.) The Combined Race Officials.
The Protest committee	Committee to administrate and to handle the protests of sailors and Race Committee in accordance RRS Part 5
The Racing area	Area where within the sailing regatta will be held
The Course	The route which must or could be sailed to have a legitimate result.

APPENDIX A

1. Windward - leeward course LA



Course LA: Windward/Leeward with Offset Mark. Leeward finish		Course signal
LA2	Start – 1 – 1a – 2s/2p – 1 – 1a - Finish	Pennant 2
LA3	Start – 1 - 1a – 2s/2p – 1- 1a – 2s/2p – 1 – 1a - Finish	Pennant 3
LA4	Start – 1 – 1a – 2s/2p – 1 – 1a – 2s/2p – 1 – 1a – 2s/2p – 1 – 1a - Finish	Pennant 4